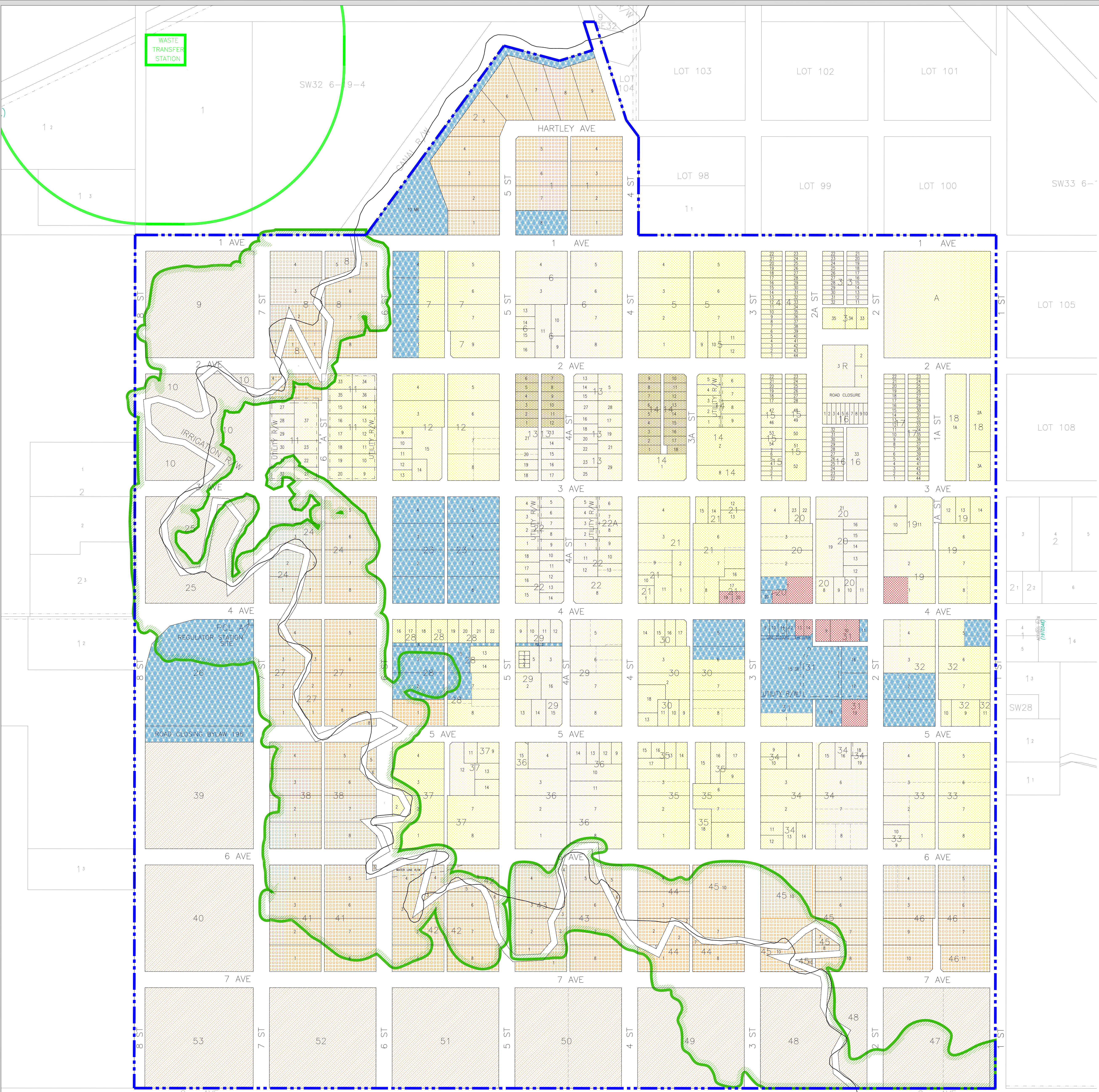


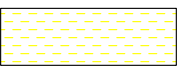
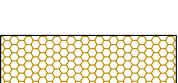






# VILLAGE OF STIRLING

All Sec 30, And  
Portion Of SW 1/4 Sec 32  
In Twp 6, Rge 19, W4M



VILLAGE OF  
**STIRLING**  
NATIONAL HISTORIC SITE

**LAND USE DISTRICT MAP**  
Bylaw 415-08, April 2, 2008  
Map Amended to Bylaw # 533-23, February 15, 2023

-  Residential (R)
-  Manufactured/Modular Home Residential (R-M)
-  Residential Large-Lot (R-L)
-  Commercial (C)
-  Industrial / Business (I/B) \*
- \* (no lots zoned at this time)
-  Public (P)
-  Agricultural (A)
-  Kipp Coulee Area Overlay

MAP PREPARED BY:  
OLDMAN RIVER REGIONAL SERVICES COMMISSION  
3105 16th AVENUE NORTH, LETHBRIDGE, ALBERTA T1H 5E8  
TEL. 403-329-1344  
"NOT RESPONSIBLE FOR ERRORS OR OMISSIONS"

PLOT SCALE 1:3000

